

H1 Welcome to RAI

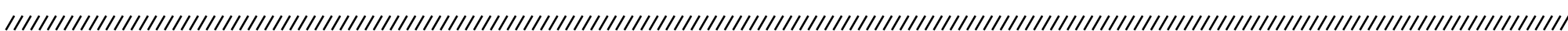
Size
60px

Lead Welcome to The Royal Anthropological Institute of Great Britain and Ireland, a scholarly association dedicated to anthropology in all its many fields and applications.

Size
24px
Line-height
32px

P The RAI is the world's longest established anthropological organisation. Since 1843, it has been at the forefront of new developments in anthropology. Its remit includes component fields, such as archaeology, biological, evolutionary, forensic, social, linguistic, cultural and medical anthropology, as well as sub-specialisms within these it seeks to combine a distinguished tradition of scholarship with up-to-theminute services to anthropology and to all anthropologists.

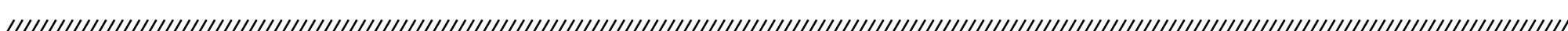
Size
19px
Line-height
28px



H2 Online Courses

Size
42px

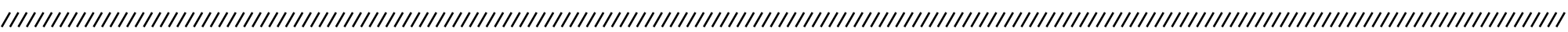
P The RAI is proud to present our new course programme provided by academics at the top of their field. These courses take place online to ensure maximum accessibility and cover.



H3 Conference summary details

Size
32px

The Royal Anthropological Institute is delighted to announce their next major conference that will take place at Senate House, University of London, 25 to 28 June 2024. The theme of the conference is Anthropology and Education, a focus that is sparked by the multiple contemporary challenges that we are faced with as a discipline as we seek to teach and educate.



H4 Upcoming events

Size
24px

Small P

The RAI is proud to present our new online courses in anthropolgy provided by academics at the top of their field. Topics covered include forensic, cultural and social anthropology.

The RAI runs a range of anthropology events including major conferences, anthropology seminars, book launches, film events and taster days for students.

Blue
#24408E

Blue Medium
#0073AD

Blue light
#E4EAF4

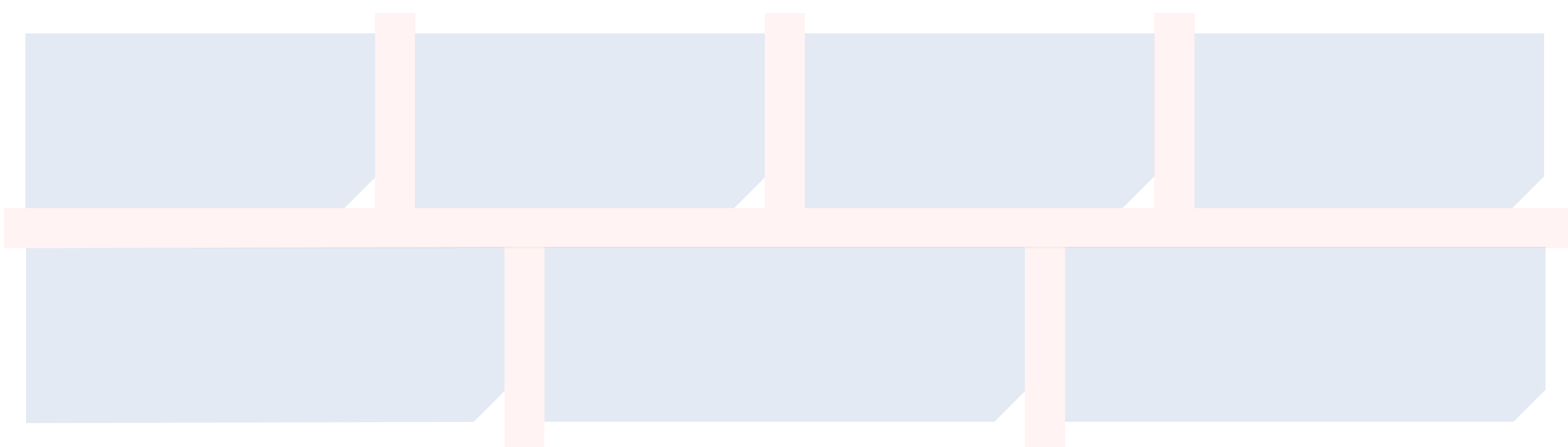
Buttons

Complete the form > Read more > Read more >

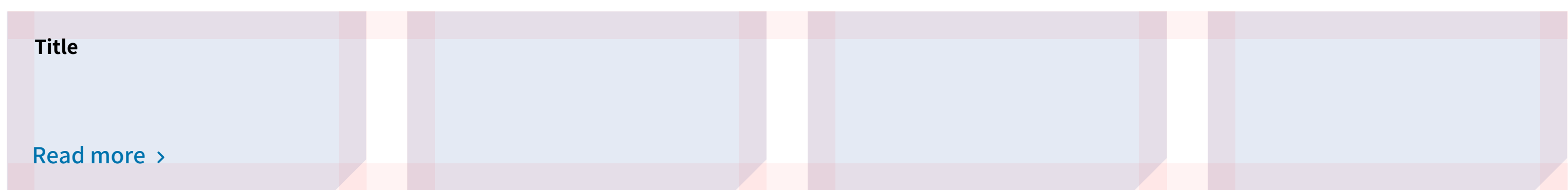
Complete the form > Read more >

Spacing

Grid gap
30px



Grid spacing
20px



Horizontal spacing

Every component of the site will use one of the following sizes to space or pad

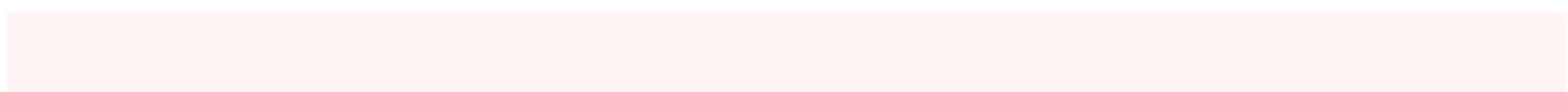
Small
20px



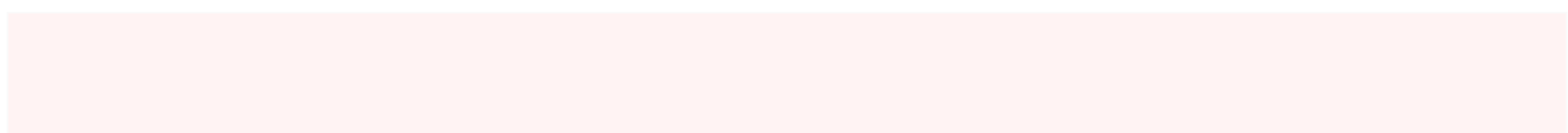
Standard
30px



Medium
60px



Large
90px



Welcome to RAI

Welcome to The Royal Anthropological Institute of Great Britain and Ireland, a scholarly association dedicated to anthropology in all its many fields and applications.

The RAI is the world's longest established anthropological organisation. Since 1843, it has been at the forefront of new developments in anthropology. Its remit includes component fields, such as archaeology, biological, evolutionary, forensic, social, linguistic, cultural and medical anthropology, as well as sub-specialisms within these it seeks to combine a distinguished tradition of scholarship with up-to-theminute services to anthropology and to all anthropologists.

Online Courses

Conference summary details

Upcoming events

The RAI runs a range of anthropology events including major conferences, anthropology seminars, book launches, film events and taster days for students.

Header



Search



Login >

Join >

Conferences ▾

Events

Education

Forensics

About us ▾

Opportunities

About the RAI

RAI Mailing List

Contact Us

Room Hire

Awards

Support Us

Committees

Jobs & Opportunities

Forensic Anthropology

Privacy Policy



Search



Login >

Join >

Conferences ▾

Events

Education

Forensics

About us ▾

Opportunities

About the RAI

Contact Us

Awards

Committees

Forensic Anthropology

RAI Mailing List

Room Hire

Support Us

Jobs & Opportunities

Privacy Policy



Directory

Join

Contact

Search



Login >

Conferences

Events

Education

Forensics

About us ▾

Opportunities



Conferences ▾

Events

Education

Forensics

About us ▾

Opportunities



Login

Join



Conferences ▾

Events

Education

Forensics

About us ▾

Opportunities



Login

Join



Conferences ▾

Events

Education

Forensics

About us ▾

Opportunities



Login

Join



Conferences ▾

Events

Education

Forensics

About us ▾

Opportunities



Login

Join



Conferences ▾

Events

Education

Forensics

About us ▾

Opportunities



Login

Join



Directory

Join

Contact

Search



Login

Join

Conferences

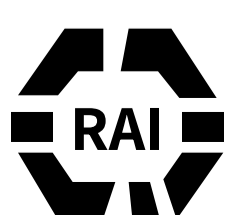
Events

Education

Forensics

About us ▾

Opportunities



About

the Royal Anthropological Institute

About The RAI

Find out about the Institution

About The RAI

The RAI is the world's longest established anthropological organisation. Since 1843, it has been at the forefront of new developments in anthropology.

[Read more about the RAI >](#)

EVENTS

Our events calendar

The RAI runs a range of events including the RAI Research Seminars, Book Launches, Film Events and London Anthropology Day.

RAI FILM

Anthropological filmmaking from around the world

Columns



Joining

Commodo him enaeos taciti commodo consectetur in vestibulum eget gravida arcu consectetur arcu.

[Read more >](#)



Courses

Ridiculus volutpat a condimentum vel a velit justo justo consectetur amet ullamcorper tempus felis mi id nullam.

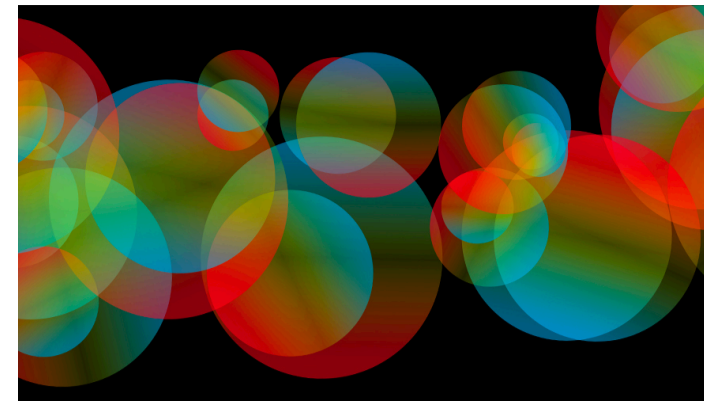
[Read more >](#)



Events

A cubilia at a feugiat hendrerit eget nam aliquam condimentum a turpis tempus maecenas.

[Read more >](#)



RAI Film

Semper blandit consectetur feugiat at massa vestibulum lobortis dictum a sapien lobortis scelerisque a aenean nostra luctus a a fringilla semper.

[Read more >](#)



Commodo him enaeos taciti commodo consectetur in vestibulum eget gravida arcu consectetur arcu.

[Read more >](#)



Ridiculus volutpat a condimentum vel a velit justo justo consectetur amet ullamcorper tempus felis mi id nullam.

[Read more >](#)



A cubilia at a feugiat hendrerit eget nam aliquam condimentum a turpis tempus maecenas.

[Read more >](#)



Joining

Commodo him enaeos taciti commodo consectetur in vestibulum eget gravida arcu consectetur arcu.

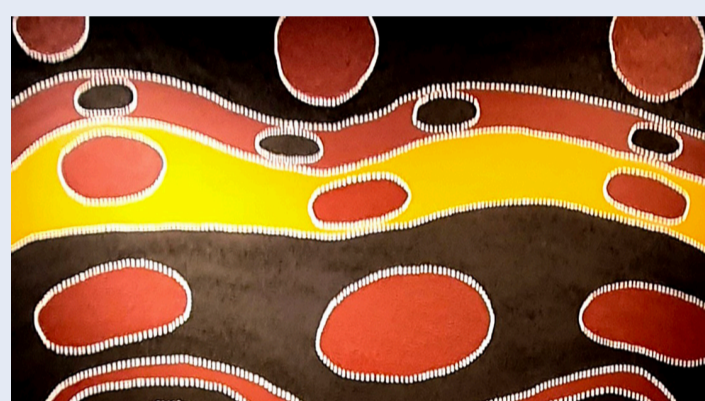
[Read more >](#)



Courses

Ridiculus volutpat a condimentum vel a velit justo justo consectetur amet ullamcorper tempus felis mi id nullam.

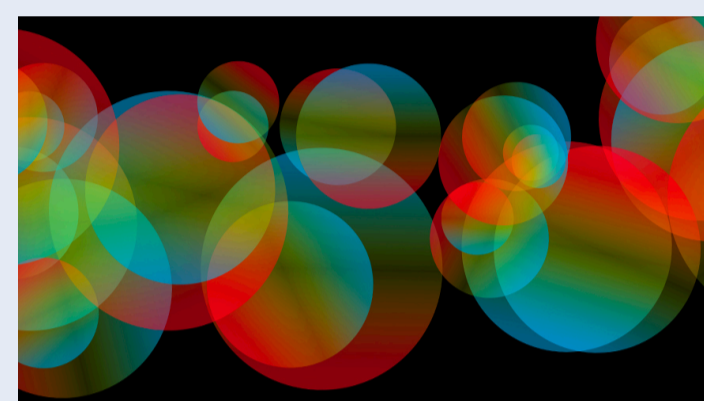
[Read more >](#)



Events

A cubilia at a feugiat hendrerit eget nam aliquam condimentum a turpis tempus maecenas.

[Read more >](#)



RAI Film

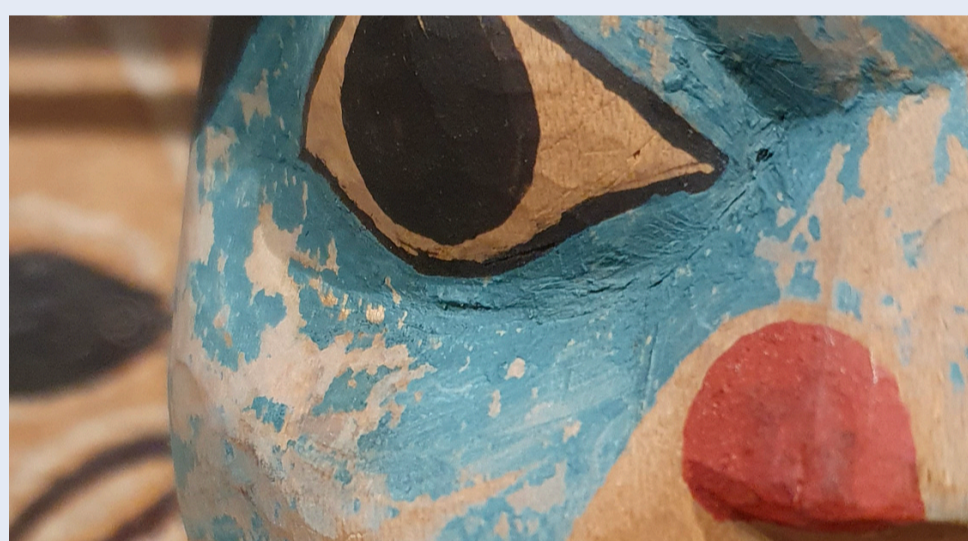
Semper blandit consectetur feugiat at massa vestibulum lobortis dictum a sapien lobortis scelerisque a aenean nostra luctus a a fringilla semper.

[Read more >](#)



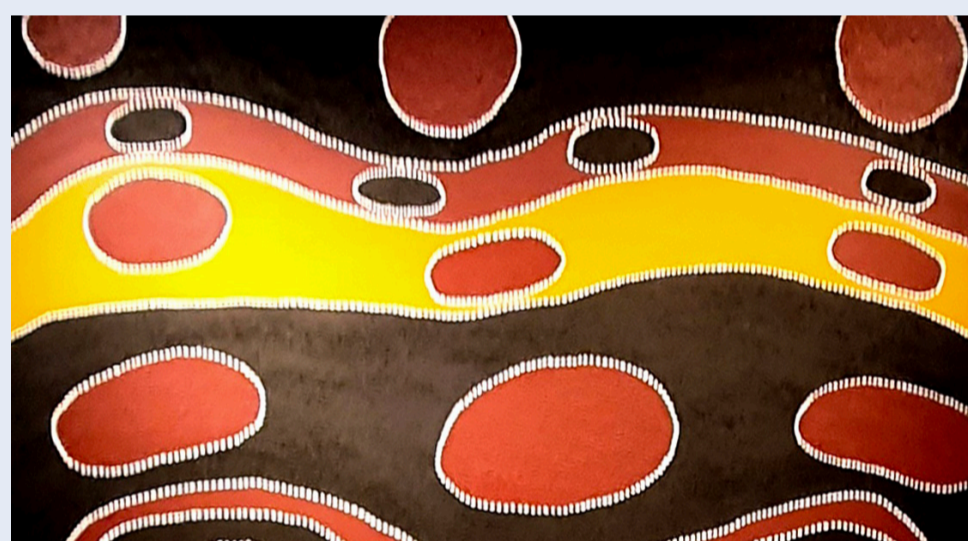
Commodo him enaeos taciti commodo consectetur in vestibulum eget gravida arcu consectetur arcu.

[Read more >](#)



Ridiculus volutpat a condimentum vel a velit justo justo consectetur amet ullamcorper tempus felis mi id nullam.

[Read more >](#)



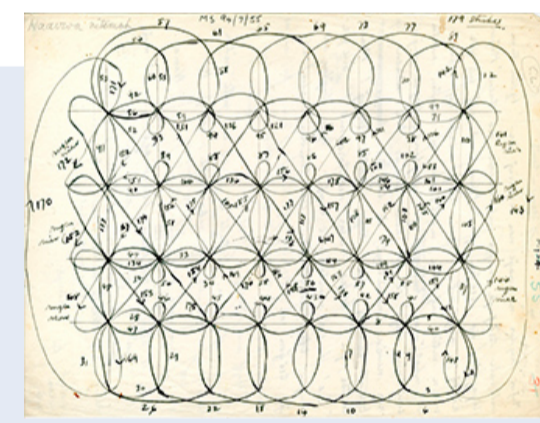
A cubilia at a feugiat hendrerit eget nam aliquam condimentum a turpis tempus maecenas.

[Read more >](#)



February 15 @ 6:00 PM
Annual William Fagg Lecture:
Michael W Scott

[Read more >](#)



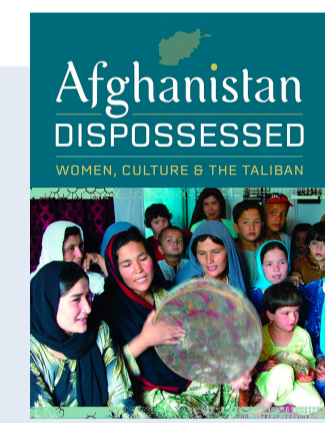
February 16
Fieldwork Sketches:
Blurring the Lines between
Art and Anthropology

[Read more >](#)



February 23 @ 4:00 PM
Book Launch: María
Cruz-Torres

[Read more >](#)



February 27
RAI Research Seminar:
Razia Sultanova

[Read more >](#)

History & mission

Nec placerat ac ultricies parturient fusce rhoncus vestibulum vehicula.

[Read more >](#)

Governance

Nec placerat ac ultricies parturient fusce rhoncus vestibulum vehicula.

[Read more >](#)

Staff

Nec placerat ac ultricies parturient fusce rhoncus vestibulum vehicula.

[Read more >](#)

Announcements

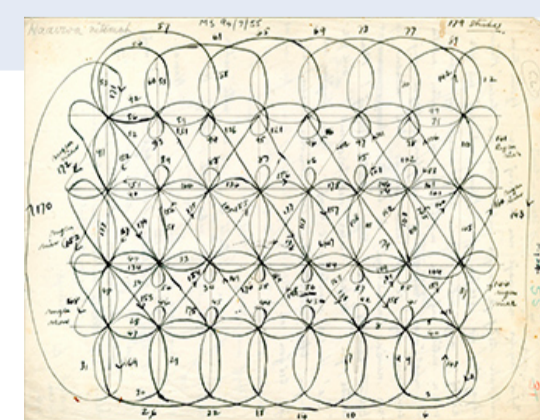
Nec placerat ac ultricies parturient fusce rhoncus vestibulum vehicula.

[Read more >](#)



February 15 @ 6:00 PM
Annual William Fagg Lecture:
Michael W Scott

[Read more >](#)



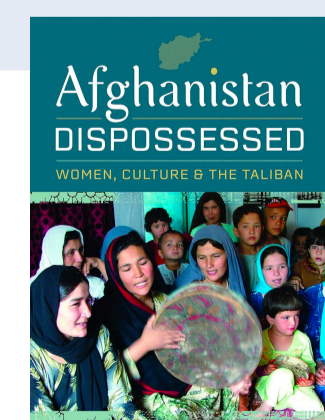
February 16
Fieldwork Sketches:
Blurring the Lines between
Art and Anthropology

[Read more >](#)



February 23 @ 4:00 PM
Book Launch: María
Cruz-Torres

[Read more >](#)



February 27
RAI Research Seminar:
Razia Sultanova

[Read more >](#)

History & mission

Nec placerat ac ultricies parturient fusce rhoncus vestibulum vehicula.

[Read more >](#)

Governance

Nec placerat ac ultricies parturient fusce rhoncus vestibulum vehicula.

[Read more >](#)

Staff

Nec placerat ac ultricies parturient fusce rhoncus vestibulum vehicula.

[Read more >](#)

Announcements

Nec placerat ac ultricies parturient fusce rhoncus vestibulum vehicula.

[Read more >](#)

Call to action / text with image

How to give to the RAI

Ridiculus volutpat a cond imentum vel a velit justo justo consectetur amet ullamcorper tempus felis mi id nullam.

[How to donate >](#)

Join us

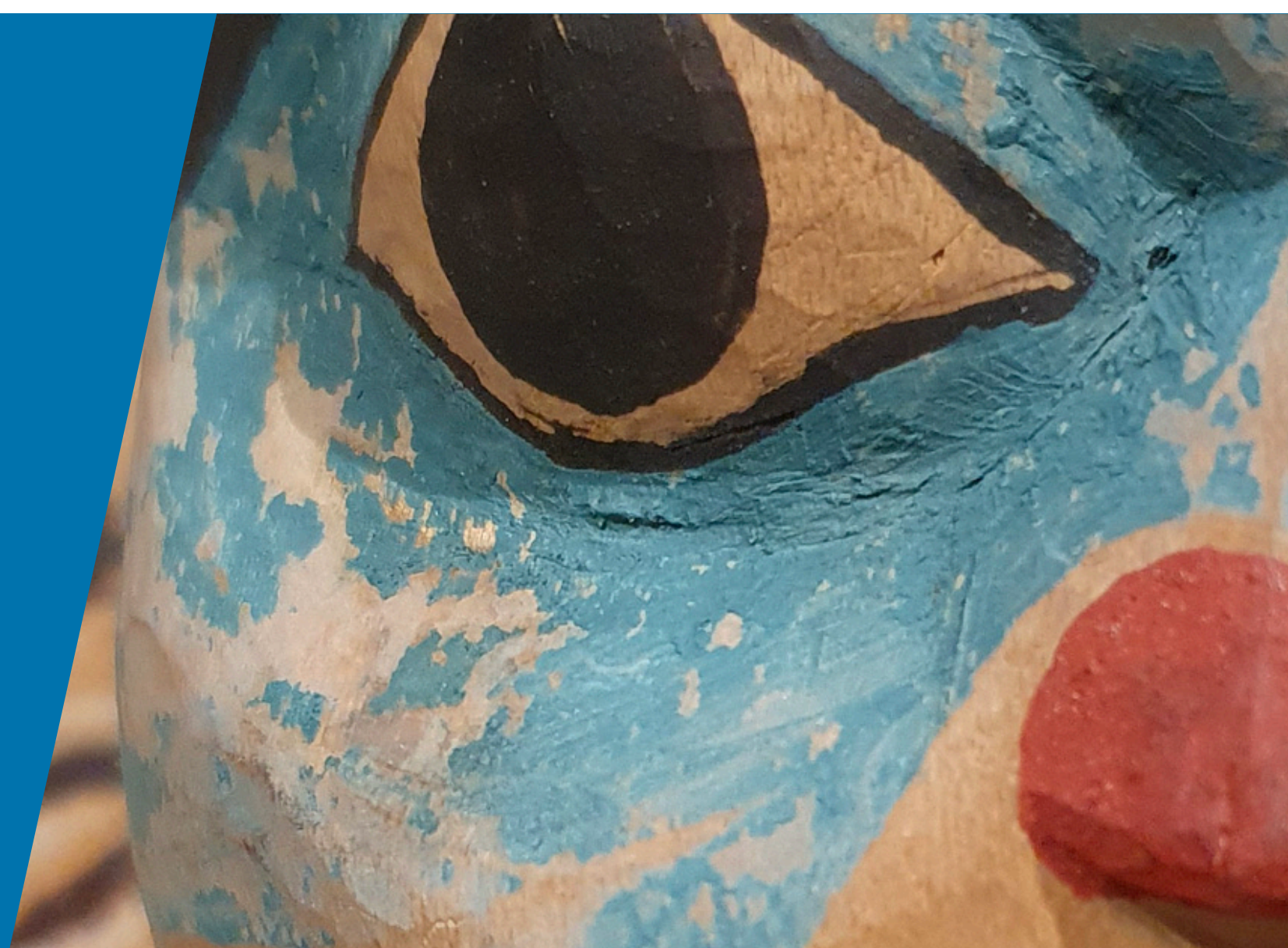
Many people from all over the world are affiliated to the RAI. We welcome anyone with an interest in the subject, read more about joining us.

[How to join us >](#)

How to give to the RAI

Ridiculus volutpat a cond imentum vel a velit justo justo consectetur amet ullamcorper tempus felis mi id nullam.

[How to donate >](#)



How to give to the RAI

Ridiculus volutpat a cond imentum vel a velit justo justo consectetur amet ullamcorper tempus felis mi id nullam.

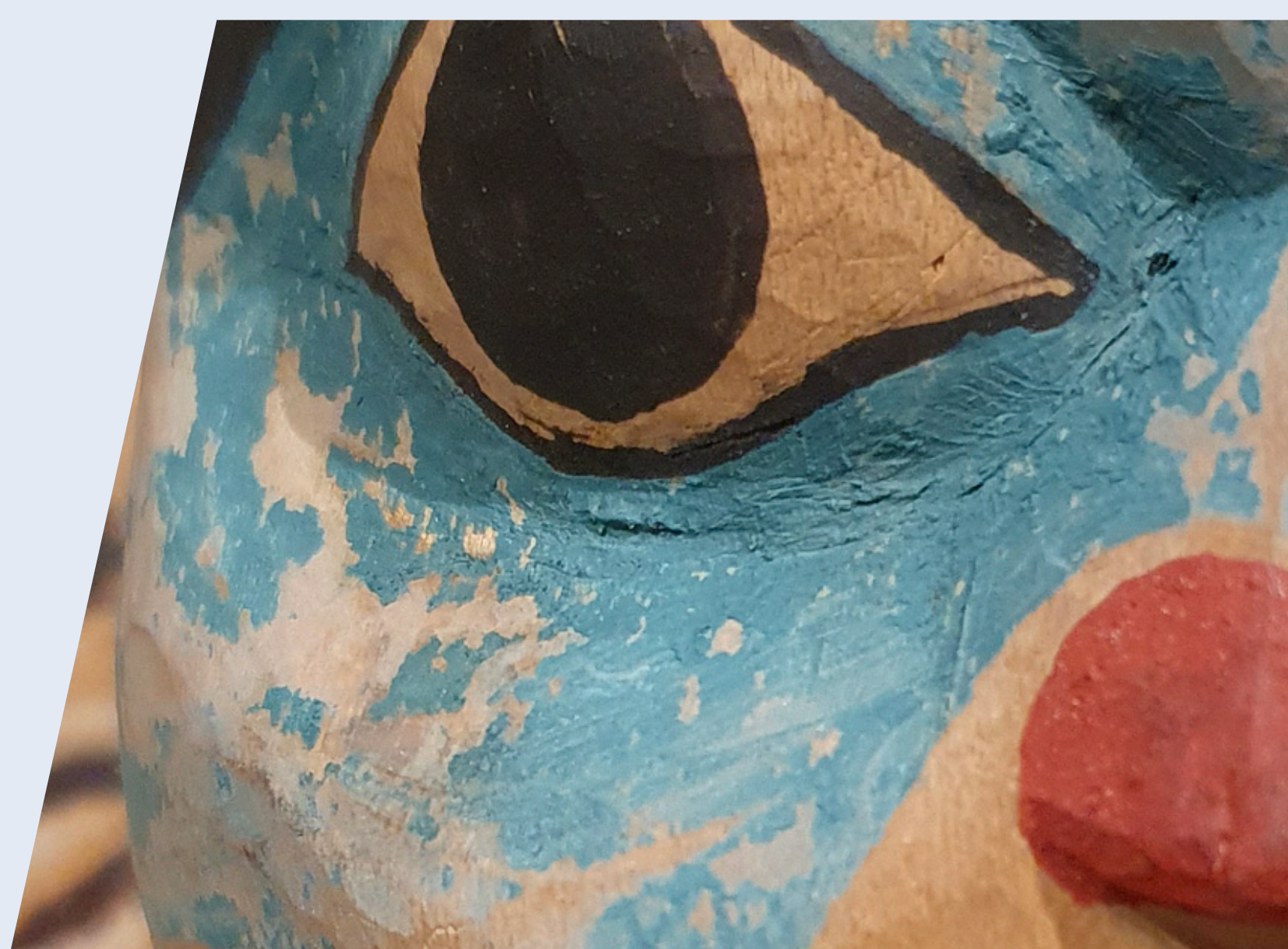
[How to donate >](#)



How to give to the RAI

Ridiculus volutpat a cond imentum vel a velit justo justo consectetur amet ullamcorper tempus felis mi id nullam.

[How to donate >](#)



About **The RAI**

History and Mission

[Home](#) > [About](#) > History and mission

World’s longest-established association

The Royal Anthropological Institute of Great Britain and Ireland (RAI) is the world’s longest-established scholarly association dedicated to the furtherance of anthropology (the study of humankind) in its broadest and most inclusive sense. The Institute is a non-profit-making registered charity and is entirely independent, with a Director and a small staff accountable to the Council, which in turn is elected annually from the Fellowship. A list of the past Presidents is available here. It has a Royal Patron in the person of HRH The Duke of Gloucester KG, GCVO.

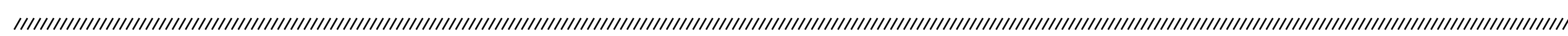
Stretching more than 150 years

The Royal Anthropological Institute seeks to combine a distinguished tradition of scholarship stretching back over more than 150 years with the active provision of services to contemporary anthropology and anthropologists (including students of anthropology). It has a particular commitment to promoting the public understanding of anthropology, and the contribution of anthropology to public affairs. It publishes journals, has a privileged link with the Anthropology Library (British Museum), has a film and video library and an extensive photographic collection, gives awards for outstanding scholarship, organises lectures and meetings, and manages a number of trust funds for research. The journals circulate throughout the world, and about 70% of subscriptions revenue comes from outside the UK. Other specialist interests are represented through Committees.



Image caption - explain this image here

The Institute’s regular special lectures comprise the Huxley Memorial Lecture (delivered annually), the Presidential Address (delivered at least once in each presidency) and the Henry Myers and Curl Lectures (given in alternate years). Other special events are organised from time to time, and are widely advertised.



Award winning

The Institute awards several international prizes, such as the Curl Essay Prize, the Wellcome Medal for Medical Anthropology, the Lucy Mair Medal for Applied Anthropology, and the J.B. Donne Essay Prize in the Anthropology of Art. It administers several Trust funds which award research grants, including the annual Leach/RAI Fellowship, and the annual RAI Fellowship in Urgent Anthropology.

The Institute is funded from subscriptions, from the income on endowments, and other earned income. It has its own freehold building in central London. Council and Committee members and the editorial team of the Institute’s principal journal, the Journal of the Royal Anthropological Institute, give their services without remuneration.

A Royal Charter company. Registered in England No. RC000916. Charity Commission no. 1195523. VAT no. 240 3500 18.

Contact

info@therai.org.uk

Mailing list

Interested in news and updates from the RAI? Subscribe to our mailing list below.

About the RAI

[Joining](#)

[Event Recordings](#)

[Awards](#)

[Forensic Anthropology](#)

[Online Courses](#)

Resources

[Anthropology Index Online \(AIO\)](#)

[Anthropology Library](#)

[Archives & Manuscripts](#)

[Photographs](#)

[RAI Film](#)

[Education](#)

[Publications](#)

About **The RAI**

History and Mission

[Home](#) > [About](#) > History and mission

In this section

History and Mission

[Governance](#)

[Staff](#)

[Support Us](#)

[RAI Announcements](#)

World’s longest-established association

The Royal Anthropological Institute of Great Britain and Ireland (RAI) is the world’s longest-established scholarly association dedicated to the furtherance of anthropology (the study of humankind) in its broadest and most inclusive sense. The Institute is a non-profit-making registered charity and is entirely independent, with a Director and a small staff accountable to the Council, which in turn is elected annually from the Fellowship. A list of the past Presidents is available here. It has a Royal Patron in the person of HRH The Duke of Gloucester KG, GCVO.

Stretching more than 150 years

The Royal Anthropological Institute seeks to combine a distinguished tradition of scholarship stretching back over more than 150 years with the active provision of services to contemporary anthropology and anthropologists (including students of anthropology). It has a particular commitment to promoting the public understanding of anthropology, and the contribution of anthropology to public affairs. It publishes journals, has a privileged link with the Anthropology Library (British Museum), has a film and video library and an extensive photographic collection, gives awards for outstanding scholarship, organises lectures and meetings, and manages a number of trust funds for research. The journals circulate throughout the world, and about 70% of subscriptions revenue comes from outside the UK. Other specialist interests are represented through Committees.

The Institute’s regular special lectures comprise the Huxley Memorial Lecture (delivered annually), the Presidential Address (delivered at least once in each presidency) and the Henry Myers and Curl Lectures (given in alternate years). Other special events are organised from time to time, and are widely advertised.

Award winning

The Institute awards several international prizes, such as the Curl Essay Prize, the Wellcome Medal for Medical Anthropology, the Lucy Mair Medal for Applied Anthropology, and the J.B. Donne Essay Prize in the Anthropology of Art. It administers several Trust funds which award research grants, including the annual Leach/RAI Fellowship, and the annual RAI Fellowship in Urgent Anthropology.

The Institute is funded from subscriptions, from the income on endowments, and other earned income. It has its own freehold building in central London. Council and Committee members and the editorial team of the Institute’s principal journal, the Journal of the Royal Anthropological Institute, give their services without remuneration.

A Royal Charter company. Registered in England No. RC000916. Charity Commission no. 1195523. VAT no. 240 3500 18.

How to give to the RAI

Ridiculus volutpat a cond imentum vel a velit justo justo consectetur amet ullamcorper tempus felis mi id nullam.

[How to donate >](#)



Contact

[✉ info@therai.org.uk](mailto:info@therai.org.uk)

Mailing list

Interested in news and updates from the RAI? Subscribe to our mailing list below.

[Submit >](#)

About the RAI

[Joining](#)

[Event Recordings](#)

[Awards](#)

[Forensic Anthropology](#)

[Online Courses](#)

Resources

[Anthropology Index Online \(AIO\)](#)

[Anthropology Library](#)

[Archives & Manuscripts](#)

[Photographs](#)

[RAI Film](#)

[Education](#)

[Publications](#)

Welcome to The RAI

The Royal Anthropological Institute of Great Britain and Ireland, a scholarly association dedicated to anthropology in all its many fields and applications.

[Read more about the RAI >](#)



JOINING

- Print and online access to RAI journals
- Free or reduced-rate admission to RAI events
- Access to the Anthropology Library and online resources
- Free access to the RAI archives by appointment

[Join The RAI >](#)



COURSES

The RAI is proud to present our new online courses in anthropology provided by academics at the top of their field. Topics covered include forensic, cultural and social anthropology.

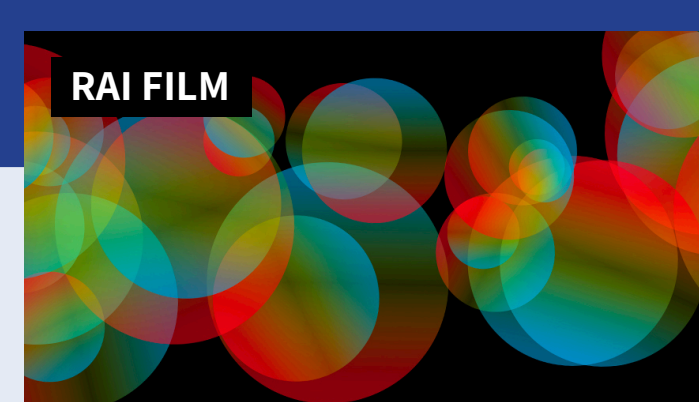
[Online courses >](#)



EVENTS

The RAI runs a range of anthropology events including major conferences, anthropology seminars, book launches, film events and taster days for students.

[Events >](#)



RAI FILM

RAI Film curates a biennial film festival, runs a film sales service and maintains a film archive.

[Read more >](#)

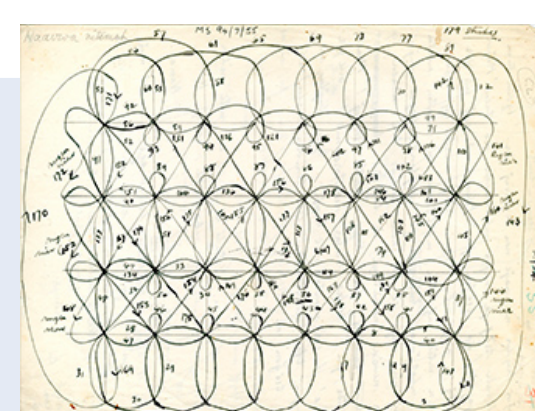
Upcoming events

[View all >](#)



February 15 @ 6:00 PM
Annual Willian Fagg Lecture:
Michael W Scott

[Read more >](#)



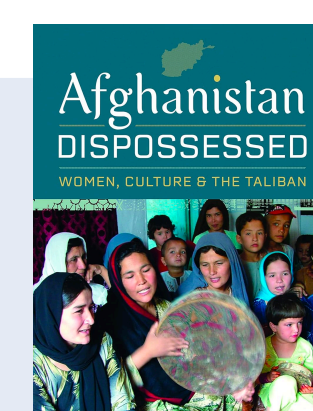
February 16
Fieldwork Sketches:
Blurring the Lines between
Art and Anthropology

[Read more >](#)



February 23 @ 4:00 PM
Book Launch: María
Cruz-Torres

[Read more >](#)



February 27
RAI Research Seminar:
Razia Sultanova

[Read more >](#)

Latest RAI Announcements



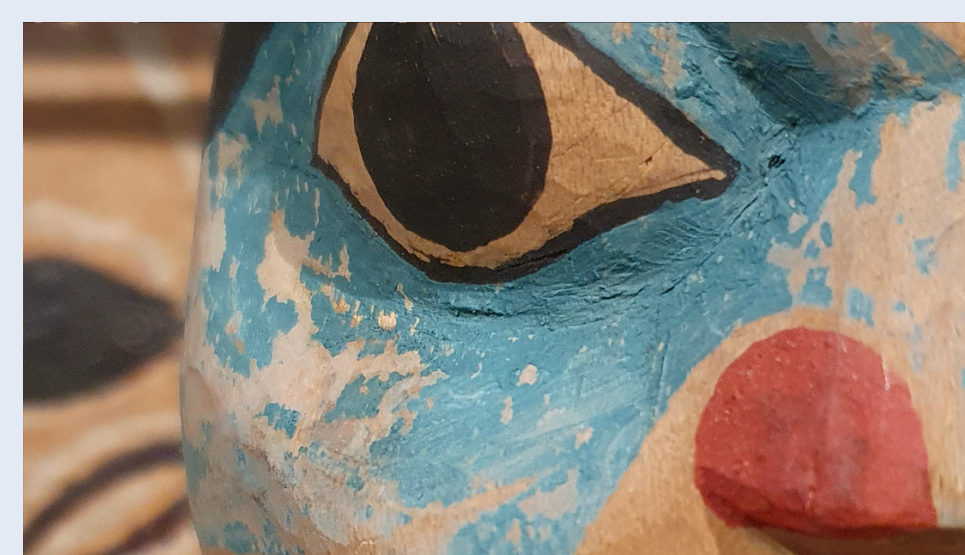
Haddon and the Aran Islands: the beginning of visual anthropology.

[Read more >](#)



25 June – 28 June, Anthropology and Education 2024

[Read more >](#)



Online Courses

The RAI is proud to present our new course programme provided by academics at the top of their field.

[Read more >](#)

How to give to the RAI

Ridiculus volutpat a cond imentum vel a velit justo justo consectetur amet ullamcorper tempus felis mi id nullam.

[How to donate >](#)

Contact

info@therai.org.uk

Mailing list

Interested in news and updates from the RAI? Subscribe to our mailing list below.

[Submit >](#)

About the RAI

[Joining](#)

[Event Recordings](#)

[Awards](#)

[Forensic Anthropology](#)

[Online Courses](#)

Resources

[Anthropology Index Online \(AIO\)](#)

[Anthropology Library](#)

[Archives & Manuscripts](#)

[Photographs](#)

[RAI Film](#)

[Education](#)

[Publications](#)

Mobile menu

